



**COMMON
ASSESSMENT
INITIATIVE**

CALIFORNIA COMMUNITY COLLEGES

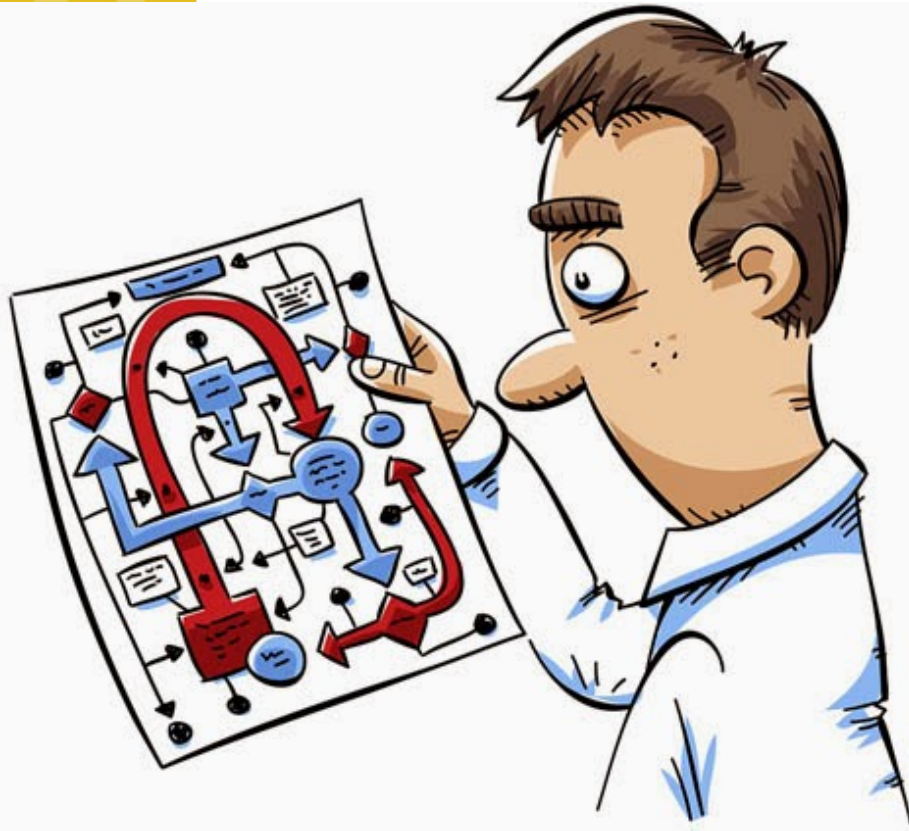
Progress on the CAI

February 24, 2016

Jennifer Coleman, EdD
CCC Technology Center, Butte College

COMMON **ASSESSMENT** INITIATIVE
ASSESS FOR STUDENT SUCCESS

Omar's Story



- Valley College
 - English
 - CPT, English 1A
 - Math
 - MDTP, Int. Algebra
- Bayview College
 - English
 - ACT, 2 levels below
 - Math
 - CPT, Elem. Algebra



CAI Overarching Goal

- Develop a comprehensive, common assessment *system* that:
 - aligns to state legislation
 - reduces unnecessary remediation
 - provides statewide efficiencies
 - effectively supports faculty and staff to ensure accurate student placement, resulting in more successful student outcomes



Key Objectives

- A test that covers curricular areas of
 - Math
 - English
 - English as a second language (ESL)
- Adaptive at the Testlet level
- Multiple Measures
- Assessment Preparation
- Accessibility as a primary consideration



Assessment, Not Placement

- Placement is locally determined
- Raw data is portable
- No traditional cut scores
- Map of Student Competencies
- Validation steps
 - Statewide
 - Local



2014 in Review

- Launch website – January 2014
 - www.cccassess.org
- Establish Governance – March 2014
 - Stakeholder representation
- Environmental scan – May 2014
- Pilot College Application, Selection – May 2014
- Request For Information (RFI) – June 2014
- Work Group formation, meetings – June 2014



2015: Building A System

- Unicon, Inc. – software development
 - Platform
 - Administration



- Link-Systems International, Inc. (LSI)
 - World Wide Test Bank
 - English, ESL
 - Math



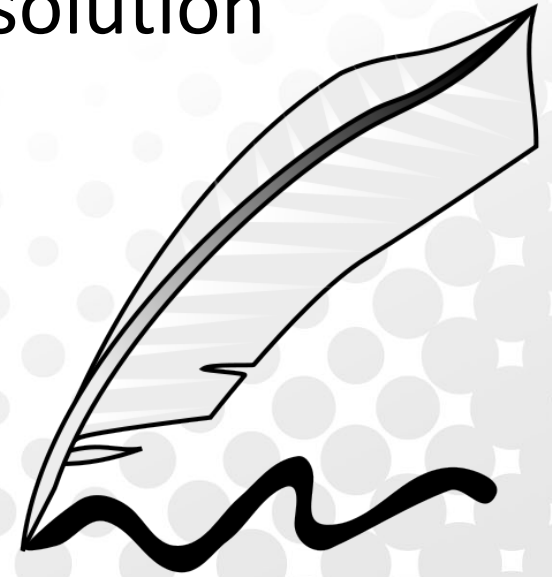
Work Group Highlights

- Math (includes above college-ready)
- English (includes Reading)
- ESL (includes Noncredit)
- Multiple Measures
- Professional Development
- Test Development Process
- Platform (User Interface, Reporting)



Writing Samples

- English and ESL
- What will be offered to colleges
- ASCCC Human Scoring Resolution
- Locally controlled factors
- Portability



Multiple Measures

- Overlap with Multiple Measures Assessment Project (MMAP)
 - Currently convening
 - Pilot college overlap
- Non-cognitive measures
- Research to come
- What will be offered?



Pilot Colleges Selected

- Bakersfield College
- Butte College
- Chaffey College
- DeAnza College
- Delta College
- Diablo Valley College
- Fresno City College
- Rio Hondo College
- **Sacramento City College**
- Saddleback College
- Santa Monica College
- West Los Angeles College



Pilot Phase

- Two components
 - Test
 - Data collection and Validation
 - Technology/Platform
 - Student information system interface
- Professional Development
- Iterative process
- Not a static solution



Timeline

- Spring 2016
 - Field testing and test validation data gathering
- Summer 2016
 - Approval by CCCCO ASWG
- Fall 2016
 - Release and Implementation begins
- Ongoing
 - Professional Development
 - Feedback and continuous improvement
- Success!



Now What?

- We know what is coming.
- What does that entail locally?
- How do we get started?



Professional Development

- User types
 - IT/Software interface
 - Assessment Center staff
 - Faculty including Counselors
 - Research
- Local control factors
- PD Advisory Committee – with EPI/OEI
- Leveraging other PD events/activities



IT Considerations

- Integration into SIS
- Statewide Data Warehouse
- Web-based portal
 - Student Services Portal (EPI)
- Local integration points
- IT considerations



Faculty Considerations

- Competency Maps
 - C-ID, CB21, Common Core
- Placement Models
- Custom Algorithms for 113 Colleges
- Class-level aggregate reports
- Counseling Reports
- Interpretation of Results
- Student-Facing Reports



Researcher Considerations

- Local Validation
 - Disproportionate impact
 - Local placement models
- Reports Dashboard
 - Standard
 - Custom



Assessment Staff Considerations

- The Platform
- Activating an Assessment
- Reports
- Troubleshooting
- Support Services



How to get started

- Local Implementation Teams
 - Recommended members
 - Formation
 - Next steps
 - Monetary resources to be provided



Communications

- Visit CCCAssess.org
 - Join the CAI Interest listserv
 - Watch for biweekly newsletters
 - Track the CAI Road Show
- Add CAI to department meeting agendas
- Provide feedback
- Forward comments, concerns, questions



Lead the Charge

- Become the expert
- Look ahead
- Think in terms of Student Success





**COMMON
ASSESSMENT
INITIATIVE**

CALIFORNIA COMMUNITY COLLEGES

Questions?

Thank you

For the invitation and opportunity

www.CCCAssess.org

jcoleman@ccctechcenter.org

COMMON **ASSESSMENT** INITIATIVE
ASSESS FOR STUDENT SUCCESS