



MiraCosta College Community Education & Workforce Development

February 2017

PROGRAMS & FUNDING

2007

- Community Education Enrichment courses
- Work Skill courses (Supervisory Academy, HR Certificate Program, etc.)
- Excursions
- Drivers Education
- ELI
- College for Kids
- Contract Training

2008-2012

- Hybrid Vehicle Technician Program (Grant)
- Green Building (Grant)
- Solar PV Installation (Partnership)
- Vet Assistant Redesign
- Machinist Program at Landes Center
- Tuition Assistance
 - VSAT (Partnership)
 - Scuba Dive Master (Partnership)
 - CAPS
- WIA Funding

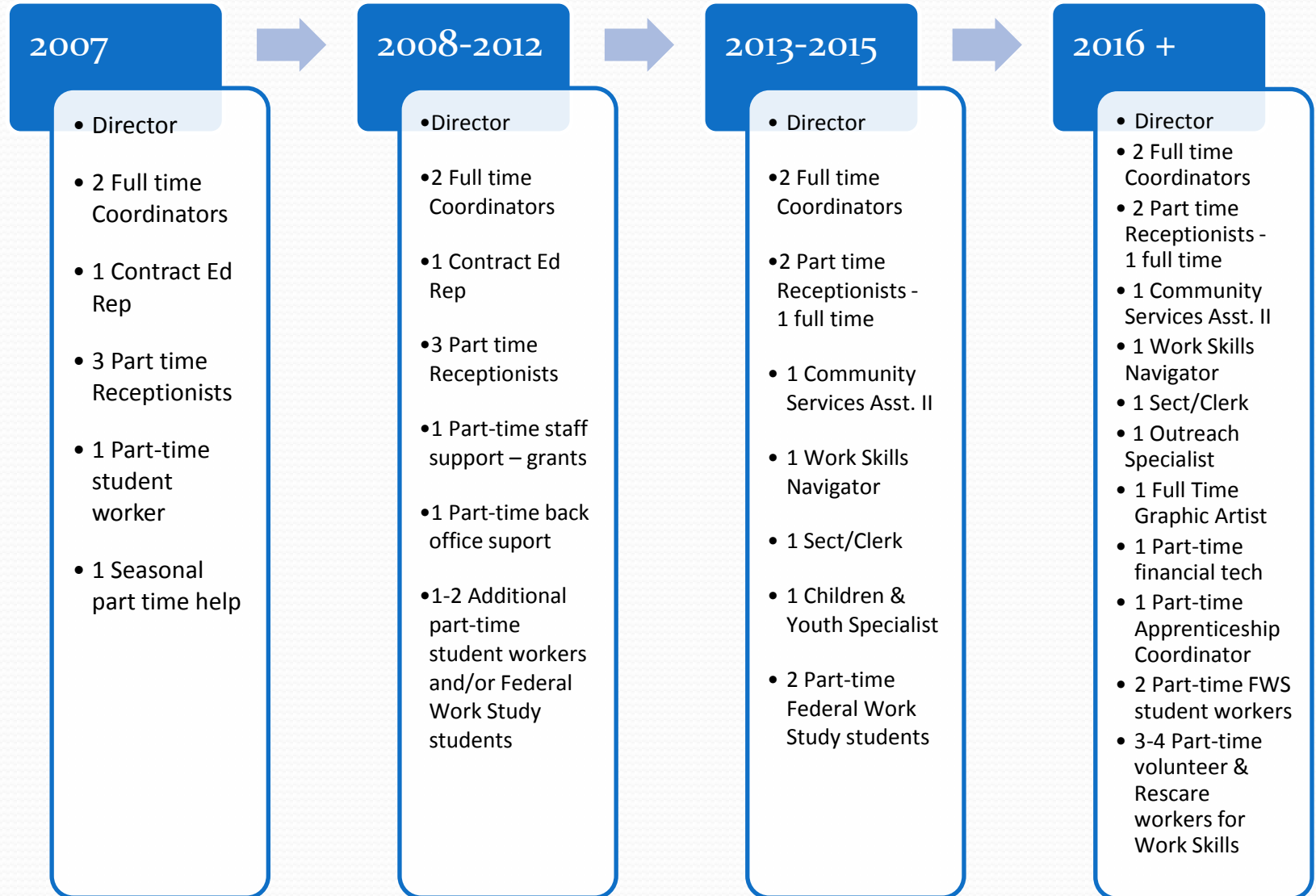
2013-2015

- GI Bill Funding
- High Threat Protection Specialist
- Executive Protection
- High Risk First Responder
- TAACCCT Grant
- New facility in Carlsbad
- Added Support Services in WS Programs
- Engineering Technician Program
- Approximately 20 Incumbent Worker Courses
- Motorcycle Safety
- Redesign Solar Program
- Phlebotomy Technician (Partnership)
- Electronic Assembly
- Launch of multiple work skill programs that didn't last (Casino Dealer, Facility Management, Optical Assistant, Personal Care Assistant, etc.)

2016 +

- Welding (miscellaneous smaller grants)
- Merge with San Dieguito Adult School
- Apprenticeships (Able-Disabled grant)
- America's Promise Grant
 - Biomedical Equipment Technician
 - Craft Brewing Technician
 - Robotics Certificate
 - Marine Engineering
 - ROV/UAV Operator
 - Quality Control Technician
 - Work Readiness Bootcamp
- Additional Security Programs
- Advanced EMT
- Multimedia Equipment Technician (Partnership)
- Marketing & Outreach

STAFFING



What Affected our Growth?

Client Need

- Industry – what programs do they want
- Public
 - What are they interested in?
 - Will they pay for it vs. Cost to run

Program Need

- What equipment/supplies are needed
- Does the space exist?
- What “extras” are required?
 - Enrollment
 - Support Services
 - Externships, etc.

Staffing Capacity

- How much can they do
- How much are they willing to do
- Are the “partnerships” worthwhile
(Example: not a strain on our staff)

Funding

- TA, GI Bill
- WIA/WIOA
- Other
“scholarship”
funding sources
- Grants
- Salaries &
Benefits
- “Free” staffing
options

Example of Negative Growth: Too Many Grants!

Grant Funded Programs get more attention than non-grant programs.

Tracking purchases and requisitions becomes more complicated

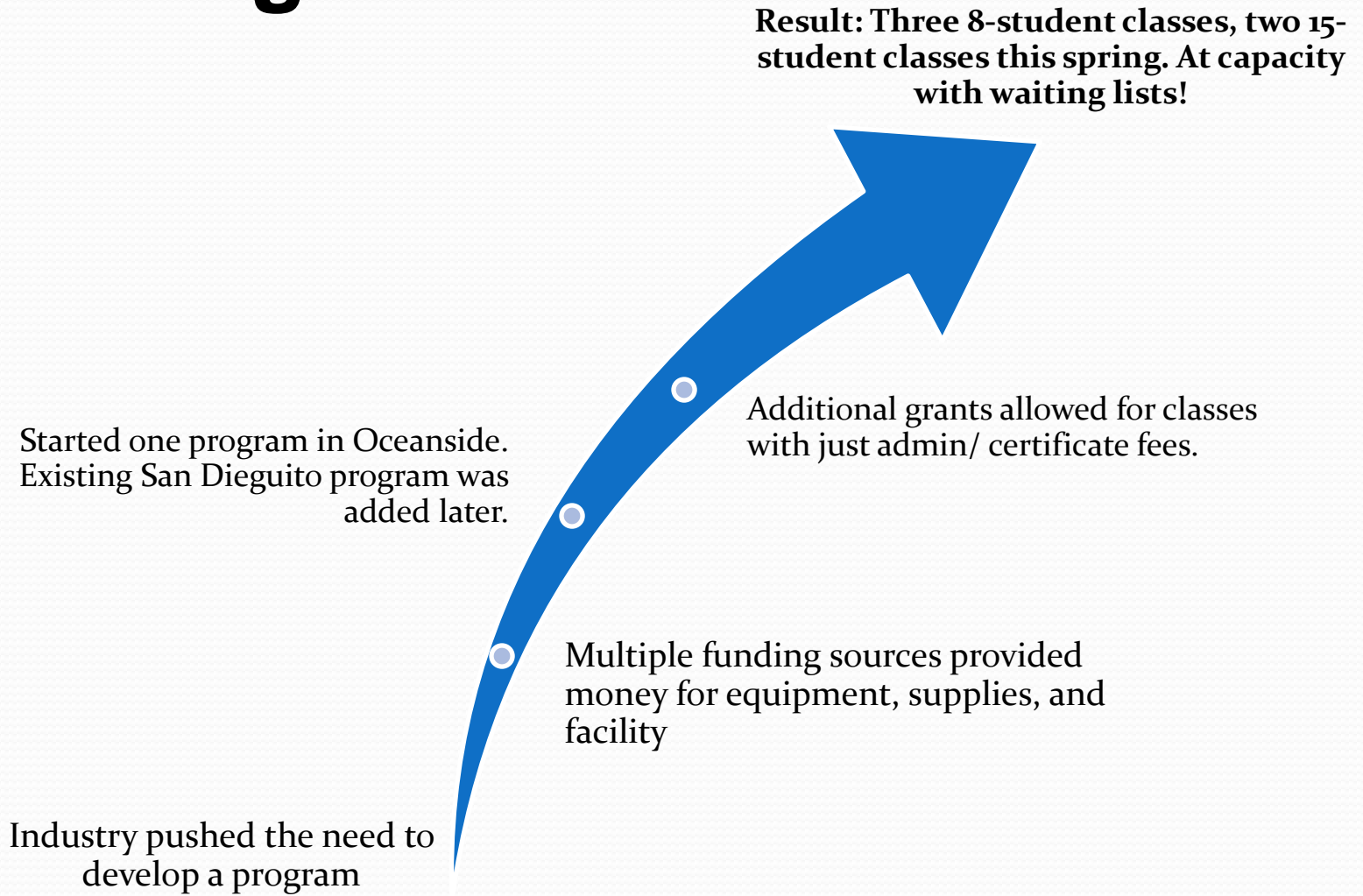
Reporting and data management can overwhelm staff

Challenges hiring enough staff or hiring them quickly enough.

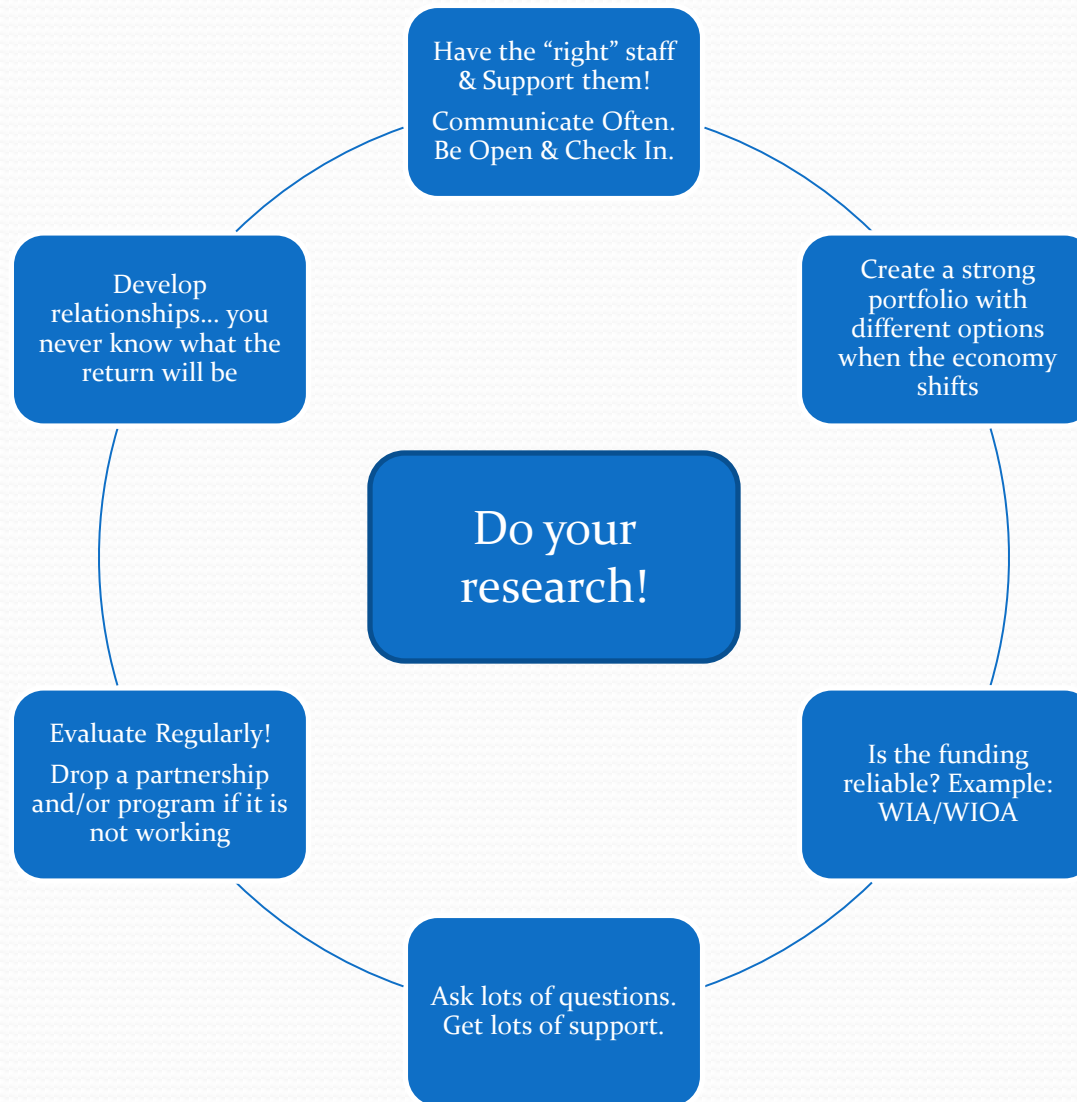
All the new programs need space and equipment that doesn't exist.

Result: things can fall through the cracks, stressed staff, and potentially unhappy customers.

Example of Positive Growth: Welding



Lessons Learned



Break into two groups:

1. Write down one example of desired expansion
2. Pick one example to go over with group
3. Listen to details of problem/concerns
4. Brainstorm solutions



**Thank you.
Questions?**